



EAST SIDE LAKE WINNIPEG TRANSPORTATION INITIATIVE

ISSUE ONE – VOLUME ONE

2009

OMAA WEZHIBII'IGAADEG:

- 1 Baakiiginigan ganawaabanjigaade wii-ozhichigaadegin miikanawan PR 34 izhi Berens River aaniin gaye gechiwaag ge-izhisegiban.
- 2 Baakiiginigan gaa-ganawaabanjigadeg akii mazina'igan dazhiikigaadeg iwe miikana.
- 3 Baakiiginigan Gichi-miikana Gaa-ozhichigaadeg
- 4 Baakiiginigan iwe miikana PR 34 izhi Berens River ge-izhising
- 5 Baakiiginigan aaniin gechiwaag ge-izhiseg owe ozhichigaadeg miikana
- 6 Baakiiginigan aaniin ekidong owe izhichigewin
- 7 Baakiiginigan Awenenag aazha gaa-wiiji'iwewaad
- 8 Baakiiginigan Aaniin ji-izhi-ganoozhiyaang

Manitoba Gichi-ogimaa onash0wewag waabanong nakeya'ii miikana ji-ozhichigaadeg gechiwaag ji-aabajichigaadeg

November 20, 2008 Manitoba Gichi-ogimaa gii-inaakonige ji-ozhichigaadenig miikana ji-aabachichigaadeg gabeya'ii bigo endaswaakiwinigaag imaa waabanong nakeya'ii Winnipeg Zaaga'iganiing. Iwe The East Side Transportation Initiative (ESTI) onaakonigem ji-ozhichigaadenig miikana gechiwaag imaa eyaawaad ji-wendaninig ningoji izhaawaad. Nawach da-minose ji-babami-ayaang miikana ayaamagak ji-aabajichigaadeg. Zhigwa igiwe East Side Road Authority gaa-inindwaa oga-niigaanishkaanaawaa' minik ji-giizhichigaadenig.

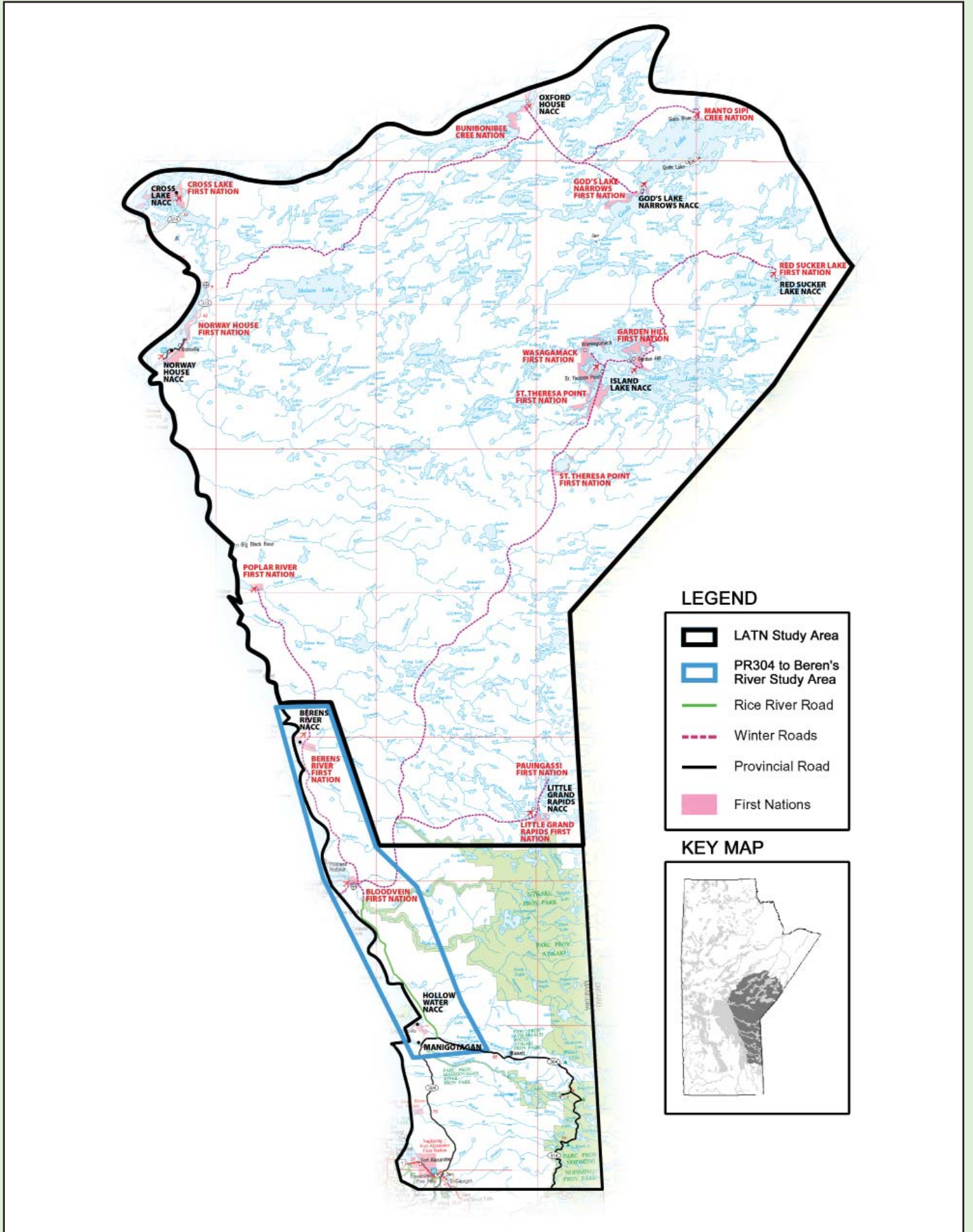
OWE ONAAKONIGEWIN JI-WENDAK JI-BABAAMI-AYAANG IMAA NAKEYA'II, DA-GANAWAABANJIGAIDE AANIIN GE-IZHISEMAGAK GECHIWAAG IMAA GAA-AYAANG GIISHIN OZHICHIGAADeg OWE MIIKANA GABEYA'II JI-AABAJICHIGAADeg PR 34 IZHI BERENS RIVER.

Igiwe ESTI ge-niigaanishkamowaad niizhwewig gegoon odazhiikaanaawaan:

- **Ji-ganawaabanjigaadeg owe waa-onachigaadeg onaakonigewin Large Area Transportation Network (LATN) Study gaa-ijigaadeg izhichigewin daga ji-minosegiban owe miikana waa-ozhichigaadeg imaa Wabanong Nakaygum Ogimaawin (WNO) gaa-izhinikaadeg, zhigwa**
- **Ji-ozhichigaadeg miikana gabeya'ii ji-aabajichigaadegiban gichi-miikana Provincial Road 34 izhi Berens River ishkonganing onachigewin. Zhigwa miinawa da-ganawaabanjigaade aaniin ge-izhiseg gechiwaag imaa ge-ozhichigaadeg aaniin gaye ge-izhichigaadegiban.**

ESRA gaa-inindwaa ogii-mazina'ige'aawaa' SNC-Lavalin Inc. gaa-izhinikaanindwaa wiiji'igonaawaa' AECOM ezhi-niizhinid. Odoozhitoonaawaan miikanawan, wii-ganawaabandaanaawaa' aaniin ge-izhiseg owe izhichigeng zhigwa gaye oga-gaganoonaawaa' gechiwaag imaa eyaanid aaniin enendaminid. Aazha ogii-maajii-dazhiikaanaawaan ezhi-niizhigin.

Owe mazina'igan wiinamaagemagan aaniin ezhichigeng owe izhichigewin. Ani-niigaan owe mazina'igan da-wiindamaagemagan aaniin ge-ani-ayizhichigeng zhigwa gaye aaniin gechiwaag imaa eyaawaad enendamowaad. Owe mazina'igan da-ozhibii'igem bebakaan anishinaabeg odinwewiniwaan daabishkoo (Cree, Ojibwe, Oji-Cree zhigwa zhaaganaashiimong)



Miikanaakewin ji-ganawaabanjigaadeg

GE-GANAWAABANJIGAADeg

Manitoba Gichi-ogimaa oganawaabandaanaawaa' aaniin ge-izhichigengiban nawach ji-wendak ji-babaami-ayaang waabanong nakeya'ii zaaga'iganing iwe Large Area Transportation Network Study gaa-ijigaadeg apii giizhaakonigaadeg.

Aaniin ji-izhichigengiban nawach ji-minosegiban ishkwaaganawaabanjigaadeg owe onashowewin. Zhigwa miinawaa da-gikenjigaade ishkwaaganagoonindwaa gechiwaag imaa eyaawaad. Aaniin igaye ge-izhi-wiiji'igowaad imaa gaa-ayaawaad maagizhaa anokiiwinan ondinamowaad zhigwa gaye ji-migoshkaajichigadesinog gechiwaag noopamakamig anishinaabeg ji-ondaadiziwaapan gemaa ayizhichigewaad bimosaadamowaad odizhitwaawiniwaa.

IMAA GE-GANAWAABANJIGAADeg

Owe ge-ganawaabanjigaadeg aandi waa-ozhitoowaad gichi-miikanawan Miskoziibiing giwedonong izhi Oxford House zhigwa waabanong izhi Ontario akiikaaning.

WAA-IZHICHIGENG

Waa-izhichigadamowaad dazhiikamowaad owe onashowewin daabishkoo:

- Maamiinochigaaadegin miikanawan biboong gaa-aabajichigaaadegin mashkawikamigaag ji-ozhichigaaadegin zhigwa aazhoganan ji-ozhichigaaadegin
- ji-maamiinochigaaadeg aayaazhoog zaaga'iganing gaa-aazhogewinindwaa gemaa oshkiya'ii da-onachigaaade ji-izhichigeng
- bebakaan odaabaanan ji-aabajichigaaadegin abooshke ogijibiig gaa-bimaasingin
- ji-ozhichigaaadeg miikanawan gabeya'ii endaswaaki ji-aabajichigaaadegin

Apii giizhaakonigaadeg owe onashowewin ishkonganing, wii-gagwe-izhichigem aanind ji-aanikechigaaadegin miikanawan gaa-aabadakin nawach ginwezh ji-aabajichigaaadegin. Imaa ge-maamiinochigaaadegin miikanawan, gemaa imaa ge-ozhichigaaadegin gemaa gaye bakaan gegoon ge-aabajichigaaadegin ji-aayaazhoogewinindwaa awiyag ogijibiig maagizhaa daa-aabadanoon, da-gagwejiimaawag imaa gechiwaag eyaawaad wegonen mawaanj ge-minosemagak ji-migoshkaajichigemagasinog gechiwaag memindage apii maadanokiing dazhiikigaadegin miikanawan.

Owe onashowewin Large Area Transportation gaa-ijigaadeg niizhwewig gegoon dazhiikigaadewanji-onachigaaadegin miikanawan ji-aabajitoowaad imaa waabanong nakeya'ii zaaga'iganing.

1 Ge-izhichigeng Owe Dazhiikigaadeg:

Owe izhichigewin da-ganawaabanjigaadewan aandi ge-ozhitoowaad miikanawan daabida ge-aabajichigaaadegin. Ono da-ganawaabanjigaadewan:

- aaniin enakamigaagin aki, azhashki, zhigwa asiniinsag ji-aabajiwindwaaban ozhichigaaadegin miikanawan
- ji-migoshkaajichigaaadesinog gechiwaag bagwadakamig memindage aniibiishan, awesiyag zhigwa giigooyag
- ji-migoshkaajichigaaadesinogin gegoon odaanaang gaa-gii-nametoowaad Anishinaabeg, odoozhichiganiwaan, anishinaabeg odizhitwaawiniwaa zhigwa gaa-aabajitoowaad noopamakamig
- ji-wiiji'igowaad gechiwaag imaa gaa-ayaawaad ji-anokiiwindwaaban zhigwa ji-ondaadiziwaapan, ji-wendaninig ningoji izhaawaad zhigwa gaye gegoon ji-onachigaaadeg gegoon niigaan ji-ani-wiiji'igowaad Anishinaabeg.
- Ji-gagwe-ozhichigaaadegin miikanawan ji-wendaninig gechiwaag imaa gaa-ayaawaad ningoji wii-izhaawaad omaa Manitoba akiing.
- Ji-naagajichigaaadeg anishinaabeg odakiimiwaa aaniin endanaabajitoowaad ji-onaadiziwaad igaye.

2 GECHIWAAG IMAA GAA-AYAAWAADJI-GAGANOONINDWAA:

Ji-gaganoonindwaa imaa gechiwaag gaa-ayaawaad ji-gagwejiimindwaa aaniin wiinawaa enendamowaad aaniin gaye ji-izhichigengiban ji-ozhichigaaadegin ono miikanawan. Aanind ono da-gagwedwem:

- **Nitam maama'ooibing** – (ziigwang/niibing, 2009) aazha gii-maaji-maama'ooibim March 2009 gaa-aginzod. Ji-dazhinjigaadeg owe izhichigewin ji-dazhiikigaadegin miikanawan ji-aabadakin, geyaabi megwaa mii ezhichigeng,
- **Anishinaabeg Gikendaasowin ji-ganawaabanjigaadeg** – (niibing, 2009) Da-ganawaabanjigaade aaniin ge-izhiseg gechiwaag noopamakamig giishin dazhiikigaadeg owe izhichigewin ji-ozhichigaaadegin ini miikanawan. Aaniin igaye ge-izhi-migoshkaajichigemagak gaa-ondaadiziwaad imaa zhigwa gaye odizhitwaawiniwaa.
- **Ani-niizhing maama'ooibing** – (bibong, 2010) Ani-niizhing da-ani-maama'ooibim da-ganawaabanjigaade wegonenan gaa-mikigaadeg aaniin maawanj ge-izhi-minoseg owe dazhiikigaadeg izhichigewin.

Baakiiginaning 6 wiindamaagemagan aaniin gaa-ikidong gaa-maama'ooibing..

GIKINAWAAJICHIGENG

Da-ganawaabanjigaade aaniin ji-izhi-gikinawaajichigeng aaniin ge-ani-ayizhichigeng niizhwaaki dazhiikigaadeg owe izhichigewin. 2010 da-giizhichigaaade owe gaa-gaganoonindwaa imaa gechiwaag gaa-ayaawaad ji-gikenjigaade wegonen ge-minosenig wiinawaa onji ge-izhi-minosewaapan.

Bigo apii ji-aabajichigaadegin miikanawan Gichi-miikana 304 izhi Berens Riverr

IZHICHIGEWIN

Gichi-miikana 304 izhi Omemewiziibiing (Berens River) ji-ozhichigaadeg miikana gabeya'ii endaswaaki ji-aabajichigaadeg. Giishin izhichigeng, Rice River Road gaa-ijigaadeg giiwedonong Manigotagan da-dazhiikigaade. Zhigwa gaa-gizhibising Rice River Road miikana da-ozhichigaade asiniidaawangaag ako izhi Berens River. Ningoji igo 170 kim da-akwaa iwe miikana.

Aazha ogii-maaji-ganawaabandaanaawaa' ji-miikanaakewaad Miskoziibiing izhi Omemewiziibiing ningoji igo 80 kms da-akwaa. Gii-ganawaabanjigaade wiin ji-miikanaakewaad Manigotagan izhi Omemewiziibiing ningoji igo 88 kms ji-gii-akwaa, mii wiin gaa-inendamowaad nitam.

GE-GANAWAABANJIGAADeg

Imaa nakekamig genawaabanjigaadeg ji-miikanaakeng, gichi-miikana PR 304 izhi Omemewiziibiing. Wii-gaganoonaawag imaa gechiwaaq gaa-ayaawaad aaniin enendamowaad ge-izhisegiban miikanaakeng gaawiin eta imaa gaa-ayaawaad daabishkoo Obaawingaashiing, Mishibaawitigong, Makadejiwanoonsing zhigwa Azaadiiwiziibiing.

GE-DAZHIKIGAADeg

Gaa-gii-dazhiikigaadegiban miikana Omemewiziibiing. Megwaa wiin ono dazhiikigaadewan:

1. Niigaan igo ganawaabanjigaade aaniin ji-izhichigaadeg miikanaakeng Loon Strait izhi Miskoziibiing.
2. Ganawaabanjigaade aandi memindage ge-miikanaakeng Miskoziibiing izhi Omemewiziibiing.
3. Ji-ganawaabanjigaadeg aaniin ge-izhisemagak gechiwaaq imaa bagwadakamig apii miikanaakeng aaniin igaye ge-izhichigengiban ji-migoshkaajichigemagasinog owe izhichigewin.

Apii giizhichigaadeg, EIA gaa-niigaanishkamowaad da-andongewag ji-maama'oobing aaniin enendamowaad imaa gechiwaaq gaa-ayaawaad.

Ono da-ganawaabanjigaadewan:

- ishkongiganan maama'oobiwaad
- ganawaabanjigaadeg anishinaabe gete-gikendaasowin (TK) studies gaa-ijigaadeg
- ganawaabanjigaadewan aandi imaa maawanj ge-minosegiban ji-miikanaakengiban Miskoziibiing izhi Memewiziibiing
- ozhichigaadegin miikanawan zhigwa aazhongan
- wegonenan ge-wiiji'igowaapan gechiwaaq imaa gaa-ayaawaad giishin maamiikanaakeng bigo apii ji-bima'adoowaapan
- aaniin gechiwaaq imaa gaa-ayaang bagwadakamig ge-izhiseg giishin miikanaakeng imaa nakeya'ii
- gaganawaabanjigaadegin aandi ge-miikanaakengiban maawanj ge-minosegibaniin
- ji-giizhichigaadeg aaniin ge-izhiseg gechiwaaq imaa gaa-ayaawaad daga gaye ji-migoshkaajichigemagakiban, ji-wiindamawindwaa gichi-ogimaa, ishkongiganan zhigwa bakaan awiyag imaa gaa-ayaawaad.

GIKINAWAJICHIGENG

- Aazha gii-maaji-onashowaade January 2009 gaa-aginzod
- Aazha nitam gii-maama'oobim March, 2009 gaa-aginzod geyaabi niigaan da-maama'oobim
- Gii-ganawaabanjigaade gete-anishinaabe gikendaasowin gaa-ziigwang 2009, zhigwa megwaa bebikish ishkongiganan oganawaabandaanaawaan.]
- Aandi imaa maawanj ge-minosegiban ji-miikanaakengiban da-giizhichigaade July, 2009 aginzod.
- Aaniin gechiwaaq bagwadakamig ge-izhisegiban, aaniin igaye ge-izhisewaad imaa gaa-ayaawaad owe izhichigeng. Zhigwa miinawaa oga-wiiji'igonaawaa' na owe izhichigeng. Ji-giizhakamigizing ani-dagwaaig 2009 aginzod.
- Ji-maajibii'igaadeg zagakibii'igewin aaniin ge-izhiseg gechiwaaq imaa owe izhichigeng, August 2009 aginzod da-giizhichigaade
- Apii giizhichigaadeg zagakibii'igewin miinindwaa gichi-ogimaag, aaniin ge-izhiseg da-zagaswe'idim ji-dazhinjigaadeg gaa-gii-gagiiginigaadegin ji-miikanaakeng zhigwa da-dazhinjigaade zagakibii'igewin August 2009 aginzod.
- Da-maadanokiim 2010 niibing
- Onashowem da-maadanokaadewan dagwaaig 2010.

Zagakibii'igewin ge-izhiseg bagwadakamig danakamigizing

Ozhichigaadeg gichi-miikana PR 304 izhi Omemewiziibiing da-maajichigaade ani-dagwaagig 2010 akiiwang. Jibwaa dash maajichigaadeg, ESRA gaa-inindwaa gaa-niigaanishkamowaad oga-zagakibii'aanaawaa aaniin ge-izhiseg imaa ge-danakamigizing. Iwe zagakibii'igewin da-wiindamaagemagan aaniin gaa-inashowaajigaadeg owe izhichigewin. Da-wiindamaagem gaye wegonen ge-meshkwajiseg odinaadiziwiniwaan gechiwaag imaa gaa-ayaawaad wegonen ge-wiiji'igowaapan owe giizhaakonigaadeg. August 2009 izhiseg da-giizhichigaade owe zagakibii'igewin, mii apii gakina awiya ge-waabandang iwe mazina'igan.

Ganawaabanjigaadeg aaniin gechiwaag ge-izhiseg gegoon inakamigizing, da:

- Ji-ganawaabanjigaadeg aaniin ge-izhiseg gechiwaag bagwadakamig aaniin gaye ge-izhiwebiziwaad gechiwaag imaa gaa-ayaawaad
- Ji-ganawaabanjigaadeg aaniin ji-izhichigeng ji-migoshkaajichemagasinog gechiwaag imaa ge-danakamigiziwaad
- Aaniin ji-izhichigengiban gechiwaag imaa gaa-ayaawaad ji-wiiji'igowaad owe izhichigewin
- Ishkwaa maadakamigizing, ani-niigaan ji-ani-zagakibii'igeng aaniin eni-ayizhisemagak

○

Wegonenan ge-ganawaabanjigaadegin jibwaa maajii-dazhiikigaadeg owe izhichigewin, daabishkoo:

- **Gechiwaag bagwadakamig zhidwa bemaadakin imaa**
 - Gechiwaag eyaamagakin bagwadakamig zhidwa azhishkiin
 - Nibiin enaagamig
- **Eyaamagakin Nibiing**
 - Bemaadiziwaad Nibiing
- **Ogidakamig**
 - Netaawigingin Bagwadakamig
 - Gaa-mamaandidowaad Awesiwag daabishkoo adikwag, moonzoog gaye
 - Aandi netaawigingin bemaadakin da-zagakibii'igadewan aaniin gaye ezhinikaadegin
 - Bineshiyag

- **Odaanaang Nametwaawin**

- Ningoji gaa-gii-na'iniding
- Anishinaabewitwaawin Nametwaawin

- **Ge-izhi-wiiji'iwemagak owe izhichigewin**

- Aaniin ji-danaabajichigaadeg aki, anishinaabe aabajitood, ji-dazhi-odaminong, gemaa ji-onji-ondaadizing

- **Endashiwaad bemaadiziwaad, waakaa'igeng zhidwa wiiji'iwewin ono onji**

- Babaami-ayaawin, ji-wendak, ji-minoseg babaami-ayaawaad awiyag imaa nakekamig



Ishkoniganing ekidowaad enendamawaad: Ishkoniganing ji-wiidookaagewaad

Onjida ji-wiidabingewaad maama'oobing gechiwaag imaa gaa-ayaawaad zhidgwa igiwe gaa-wiijiiwewaad owe onashowewin. Wiidabingewaad oada-gikendaanaawaa' aaniin ayizhichigeng owe miikanaakewin zhidgwa daa-wiindamaagewag aaniin enendamowaad aaniin gaye maawanj ge-izhi-minosegiban ji-wiijii'igowaapan. Aazha aanind gaa-wiijii'wewaad owe izhichigewin ogii-miinaawaa' Wabanong Nakaygum Okimawin gaa-niigaanishkamowaad wegonenan gaa-mikamowaad gaa-ishkwaa-ganawaabandamowaad. Niizhing gii-onachigaadewan ji-wiidabinding ji-dazhinjigaadeg aaniin gaa-ayaawaad ishkoniganing ge-doodaagowaad owe gaa-wii-miikanaakeng. Gaa-niigaaniwaad ganawaabandamowaad owe ge-izhisegiban Study Steering Committee gaa-izhinikaazowag da-wiijii'iwewag aandi imaa ji-miikanaakengiban.

Gaa-niigaaniwaad ganawaabandamowaad owe izhichigewin wii-babaa-ayizhaawag ishkoniganan imaa nakeya'ii ningogiiizhidg da-wiidabingewag. Ogaganooanaawaa' gaa-ayaanid imaa dago ogimaakaan' wii-wiindamawaawaad wegonen ayizhichigewaad zhidgwa wegonen gaye gaa-mikamowaad ganawaabandamowaad owe gaa-wii-izhichigeng. Ji-bizindawaawaad aaniin enendaminid.

NITAM GE-WIIDABINDING JI-DAZHINJIGAADEGIN ONO IZHICHIGEWINAN (ZIIGWANG, 2009)

Ezhi-niizhingin ono izhichigewinan miikanaakeng gabeya'ii ji-aabadak miikanawan zhidgwa gichi-miikana PR 34 izhi Berens River da-ganawaabanjigaade aaniin ge-izhiseg gechiwaag imaa zhidgwa gaye ge-izhisewaad gechiwaag imaa gaa-ayaawaad. Aazha ogii-maaji-wiidabimaawaa' Waabanong Nakegam gaa-ayaawaad ji-maajitoowaad:

- ji-dazhinjigaadegin ono izhichigewinan
- ji-wiindamaageng aaniin ayizhichigeng
- ji-dazhinjigaadeg aaniin enenjigaadeg owe gaa-wii-izhichigeng
- zagakibii'an aaniin ekidong

GETE-ANISHINAABE GIKENDAASOWIN

Bezhiig miinawaa gegoo zagakibii'igaadeg ganawaabanjigadeg iwe gete-anishinaabeg gikendaasowin gaa-idamowaad. Da-wiindamaagemagan aaniin gechiwaag imaa gaa-ayaawaad enendamowaad, aaniin gaye ge-izhisewaad owe dazhiikigaadeg. Aazha gii-maajii-dazhinjigaade owe gaa-wii-gichi-miikanaakeng Berens River izhi. Da-giizhi-zagakibii'igaade June 2009 aginzod. July 2009 aginzod, oga-wiidabimaawaa' gechiwaag imaa gaa-ayaanid ji-dazhindamowaad aandi ge-minosegiban ji-miikanaakengiban.

ANI-NIIZHING: ZAGASWE'IDING JI-OZHICHIGAADEG GICHI-MIIKANA BERENS RIVER IZHI AANIIN GAYE GE-IZHISEG OWE IZHICHIGENG (JULY 2009)

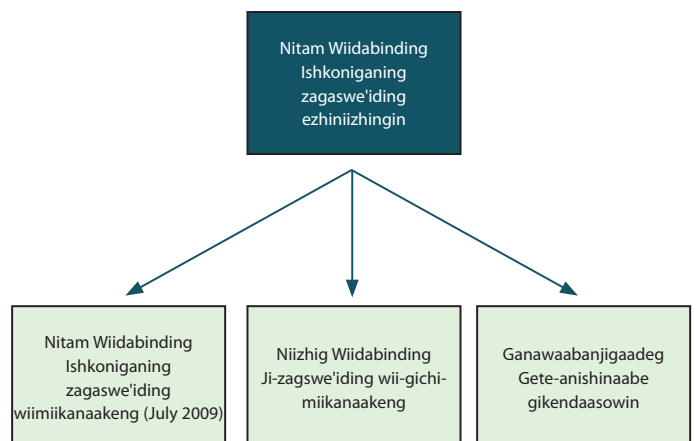
Ani-niizhing ge-izhichigeng, da-zagaswe'idim ji-dazhinjigaadeg wii-ozhichigaadeg gichi-miikana PR 304 Berens River izhi aaniin gaye ge-izhiseg da-miigiwem zagakibii'igewin wiindamaagemagak iwe. Owe wii-noonde-izhichigewag ge-niigaanishkamowaad:

- da wiindamaagem aaniin ayizhichigeng wegonen gaye gaa-aanjichigeng gaa-ishkwaa zagakibii'igaadeg wegonen gaa-gii-mikigaadeg
- da-wiindamaagem wegonen niigaan gaa-mikigaadeg aaniin ge-izhiseg gechiwaag bagwadakamig zhidgwa ge-izhiwebiziwaad gechiwaag imaa gaa-ayaawaad
- da-gagwedwem aaniin ji-izhichigengiban maawanj ge-izhi-minosegiban ji-migoshkaajichigemagasinog owe izhichigewin gechiwaag imaa
- da-zagakibii'igaade wegonen ekidong

ANI-NIIZHING GE-IZHICHIGENG ZAGASWE'IDING OWE WII-AAYAANIKESIDOONG GICHI-MIIKANAWAN IMAA NAKEYA'II (JANUARY/FEBRUARY 2010)

Ani-niizhing ge-izhichigeng wii-gichi-miikanaakeng onashowewin Large Area Transportation Network Study gaa-inindwaa gaa-niigaanishkamowaad owe izhichigewin. Wii-ganawaabandaanaawaa' ji-ozhichigaadegin miikanawan bigo apii endaswaaki ji-aabajichigaadegin. Aandi imaa ji-ozhichigaadegin, wegonen gaye ji-izhichigeng maawanj ge-izhi-minosegiban. Zagaswe'idim apii da-and one'igaadewan:

- aandi imaa ge-miikanaakeng da-ganawaabanjigaade aki imaa akii-mazina'iganan gaye da-aabadanoon ji-waabanda'iweng
- aaniin ge-izhi-ondaadiziwaapan gechiwaag imaa gaa-ayaawaad aaniin gaye ge-izhi-migoshkaajichigemagasinog owe izhichigewin. Mii iwe ge-andone'igaadeg ge-izhi-zagakibii'igaadeg.
- Da-zagakibii'igaade aaniin ekidong dazhinjigaadeg iwe gete-anishinaabeg gikendaasowin
- Aaniin ge-inagindeg miikanaakeng da-dazhinjigaade



Aaniin ezhiseg gaa-gii-wiidabingewaad ishkoni-ganing onji

Aazha gaa-izhiseg, nitam gaa-zagaswe'iding ishkoni-ganing, gaa-niigaanishkamowaad owe onashowewin ji-miikanaakeng ogii-andomaawaa' aanind ishkoni-ganing onji ji-bi-izhaanid, zhi-gwa miinawaa aanind oga-andomaawaa' apii zagaswe'iding. Ono gaa-ozhibiwindwaa da-andomaawag:

Aazha wiin gii-wiindamaagewag waabanong nakeya'ii onji gaa-ayaawaad aaniin enendamowaad owe izhichigewin gaa-gii-maajichigaadeg. Aanind gegoon aazha gaa-noondamaang

- Noonde-gikenjigaade daga anokiiwin ji-ondinigaadegiban imaa onji miikanaakeng
- Aaniin niigaan ge-ani-ayaawaad ge-izhi-wiiji'igowaapan owe gaa-wii-izhichigeng
- Aaniin apii ge-miikanaakeng Poplar Rive izhi God's River
- Aaniin ge-izhiseg noopamakamig gaa-ondaadiziwaad gechiwaag Anishinaabeg
- Aaniin ge-izhi-wiiji'igowaad gaa-aakoziwaad ji-miikanaakengiban zhi-gwa gikinoo'amaagoowin bakaan ishkoni-ganing

- Aaniin enakamigaag azhishkiin Miskoziibiing izhi-g Mishibaawitigong zhi-gwo Obaawingaashiing
- Aaniin ge-izhiwebiziwaad gaa-andawenjigewaad zhi-gwa gaa-wanii'igewaad imaa nakeya'ii
- Nawach na da-wendanoon minikwewin zhi-gwa mashkikiin ji-biindigemagakin ishkoni-ganing
- Aaniin ge-izhi-wiiji'igowaad ji-ondaadiziwaad gechiwaag imaa gaa-ayaawaad izhigewining onji
- Aaniin memindage waa-izhichigaadegin ono miikanawan gabeya'ii ji-aabajichigaadegin
- Aaniin niigaan ge-ani-izhi-wiiji'igowaapan gechiwaag imaa gaa-ayaawaad apii giizhichigaadeg owe izhichigewin
- Wegonen ge-meshkwajiseg aaniin enaadiziwaad anishinaabeg gechiwaag imaa gaa-ayaawaad
- Maagizhaa bakaan onji awiyag nawach da-ondizi-wag owe izhichigewin apiich wiin imaa gaa-ayaawaad:

COMMUNITY ENGAGEMENT SCHEDULE

Ishkonigan	Nitam Ge-zagaswe'iding
Hollow Water FN	March 30, 2009
Bloodvein FN	March 31, 2009
Berens River FN, NACC	May 05, 2009
Poplar River FN	April 02, 2009
Little Grand Rapids FN, NACC	May 06, 2009
Pauingassi FN	May 07, 2009
Cross Lake FN, NACC	July 15, 2009
Norway House Cree Nation	Pending and progressing
Norway House NACC	Pending and progressing
Bunibonibee Cree Nation	July 13, 2009
Oxford House NACC	July 13, 2009
Manto Sipi Cree Nation (Gods River)	April 16, 2009
Gods Lake Narrows FN	April 17, 2009
Gods Lake Narrows NACC	April 17, 2009
Garden Hill FN	June 01, 2009
St. Theresa Point FN	July 14, 2009
Red Sucker Lake FN, NACC	Pending and progressing
Wasagamack FN	June 02, 2009
Island Lake NACC	June 01, 2009

FN = First Nations, NACC = Northern Affairs Community Council





AANIIN JI-IZHI- GANOZHIYAANG

MAAGONIGANING GE-ONACHIGAADE

Gaa-niigaanishkamowaad owe onashowewin The East Side Road Authority (ESR) gaa-inindwaa ogii-onatoonaawaa' ji-maagoniganing aandi ge-mikamamban odizhichigewiniwaa. Omaa gidaa-inaab www.eastsideroadauthority.mb.ca.

Gewiinawaa gaa-wiidanokiingewaad SNC-Lavalin Inc. gaa-inindwaa ogii-onatoonaawaan niizh zagakibii'igewinan maagoniganing. Ji-mikaman ono zagakibii'igewinan akawe giga-inaab www.eastsideroadauthority.mb.ca , July 2009 aginzod da-giizhichigaade omaa giga-inaab:

Gaa-gichi-miikanaakeng Izhichigewin www.eslw.snclavalin.com

Gichi-miikana PR 304 Berens River izhi gaa-ozhichigaadeg www.m-br.snclavalin.com

AANIIN JI-IZHI-GANOZHIYAANG

Geyaabi noonde-gikendaman gegoon owe onashowewin onji ESTI gaa-inindwaa gemaa gaa-wii-zagaswe'iding ishkoniiganing, bigo apii gidaa-ganoonaag igiwe enokiitamowaad.

Tim Stevens, P.Eng
Gaa-niigaanabid, SNC-Lavalin Inc.

East Side Lake Winnipeg Transportation Network Study
1800-1075 West Georgia Street
Vancouver, BC V6E 4C9

Tel: 604-605-4961 Fax: 604-662-7688
E-mail: Tim.Stevens@snclavalin.com

Stephen Lindley, M.Sc., MCIP, RPP
Gaa-niigaanabid, SNC-Lavalin Inc.

PR 304 to Berens River Environmental Impact Assessment Project
2200 Lakeshore Blvd. West
Toronto, ON M8V 1A4

Tel: 416-252-5311 Fax: 416-231-5356
E-mail: Stephen.Lindley@snclavalin.com

Doug Peterson, P.Eng
Gaa-niigaanishkang anokiiwin, Engineering and Construction

East Side Road Authority Inc.
200-155 Carlton Street
Winnipeg, MB R3C 3H8

Tel: 204-945-4900 Fax: 204-948-2462
E-mail: Doug.Peterson@gov.mb.ca

Dan Highway
Giigidoowinini
Tel: 204-471-9863
E-mail: lhighway@shaw.ca